

Sixth semester projects





Susanne Bargi
Interdisciplinary Saddle

In my project I tried to solve some of the problems with inflexible and bad saddles that I have faced during many years of riding.

The result is a truly modular saddle where all the parts can be changed within minutes, and without using tools, to accommodate the situation in which the saddle is to be used. It consists of four pieces: the tree, seat, flaps and panels. The tree is the skeleton of the saddle and by attaching different seats and different flaps you can customise the saddle, and convert it quickly from a dressage to a jumping saddle. The exchangeable panels allow the saddle to change along with the horse's back as it gains or loses musculature, and make it possible to fit the same saddle to many different horses.

The tree is made out of carbon fibre to give the saddle the right strength and flexibility and to keep the weight down. Leather is used wherever the saddle is exposed to tearing, where friction is needed and where the saddle is in contact with the horse. The panels – the parts that are in closest contact with the horse – are made out of felt to provide ventilation and absorb sweat. Textile is used on parts that are easy to exchange and that are less exposed to tearing.

The styling and the colour scheme of the saddle has been developed to suit a large number of horses and the rules of competition in the classical disciplines such as jumping, dressage and eventing.

Karin Wallenbäck
Weekend Travel Wardrobe

During short trips most people don't unpack their bags and end up 'living out of their luggage'. This often tends to get messy and unorganised.

I have created a weekend travel wardrobe that caters to this practice and aims to make it a better experience. It encourages the user to pack organised by using different compartments; it gives a better overview of the contents; it enables the separation of dirty and clean laundry and makes the process of packing, unpacking and repacking easier and more structured. It includes all necessary travel accessories like a toiletry bag, laundry bag, laptop case and shoe bags. It also contains a hanging wardrobe that can be detached and hung straight into a closet. The wide handle increases stability and the oversized wheels handle uneven surfaces smoothly. To offer different carrying possibilities, the strap can be changed and used both as a handle and as a shoulder strap. The bag is collapsible and takes very little storage space when not in use.

Form and choice of material is inspired by the old days of travelling, when the trip itself was seen as something enjoyable, not just a means of getting you and your belongings from point A to point B.





Martin Fiedler
Qøb

The qøb system consists of two main elements, both representing the end and the beginning of the distribution chain of interactive panoramic media (immersive media): 1) the camera, to capture 360° pictures and movies, and 2) the wireless display, to intuitively interact with this footage. The Internet thereby works as the link between these elements, while already providing a broad variety of 360° content.



Johanna Vighagen Sten
Nimble

Sewing is an art form over 20,000 years old. Iron needles were invented in the 14th century, and the first commercially successful sewing machine was built by Isaac Singer in 1850.

Sewing machines today look similar to those of yesterday and the day before that. They've really looked the same for about 50 years! Without a doubt, there's a need for improvement in many ways.

This sewing machine is optimised with only the features necessary for a good experience. It's easy to interact with and to understand. Due to the fact that it's digital with a touch screen, it can be upgraded along with your increasing skills.

The machine case also works as a table, which makes it slim and easy to store and transport. Each

part of the machine functions as one piece of a puzzle and has its specific placement.

Due to the new, innovative feature of the case and its optimised measurements, I call the machine 'Nimble' since it is mobile and swift.



Elin Assarsson What Do You See?

There are many ways to start a design process. What happens if you choose to base your work on video clips of user scenarios? What details of the video do you focus on?

My project was about finding out if people see different phenomena in the same clip and if video is a suitable way to communicate information about the user.

It's interesting what happens when the observer interprets a situation. What does the designer see, choose to see or perhaps is unconsciously programmed to see? How does this affect your design decisions?

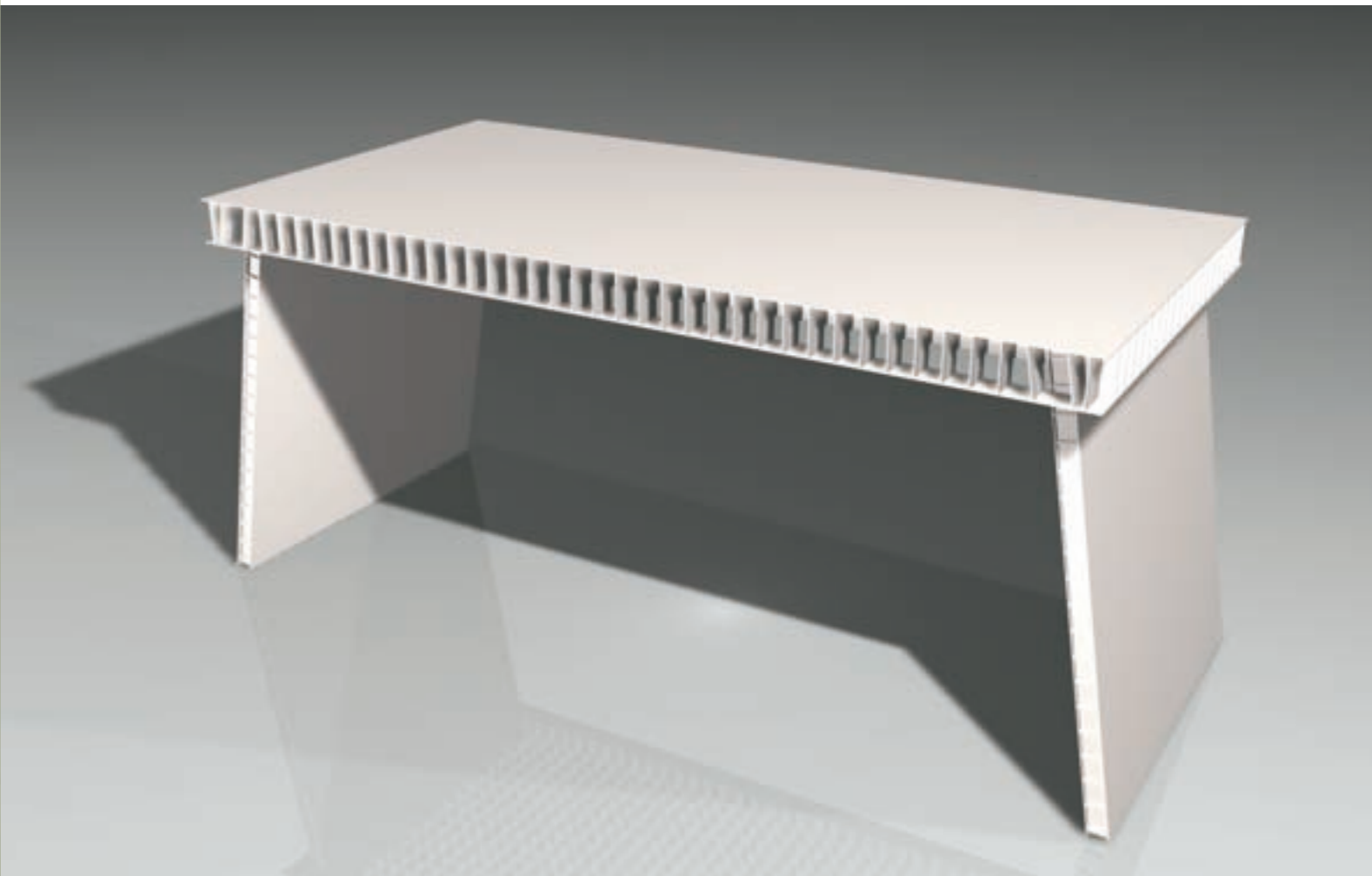


Grace Walker Straight Edge

'Straight Edge' uses cross-sections of laminated cartilage white card, and the piece dismantles at two places into an ambiguous stowaway rectangle. Named 'Straight Edge' because of its evident assembly and structural patterns, users will relish the versatility of its use and storage options.

It felt almost forbidden to try and make a dining table out of cardboard. Indeed, the project can be read as questioning dogmatic practice and contemporary design convention. How can form follow function

when you're breaking the basic rules of design? Perhaps surprisingly, the use of folds, origami and textures can be combined with structural techniques and geometry to create a stable, strong piece. A mathematical approach was necessary for the piece's conception and construction.





Lovisa Nersing
Stig

'Stig' is a stepladder that provides safe climbing for active elderly people and people who feel insecure of heights. Many old people are doing the same activities as they have always done, regardless of their age. They keep climbing chairs, kitchen stools, etc. even though it often is hazardous.

The stepladder has a high handle that supports the user and bent legs which increase stability. It is made of bent wood and can be placed as a piece of furniture or stored away for extra space.

Elina Westman
Boots

On the market today there are a lot of hiking boots with different functions, materials and prices. Some of them are advanced and some are more basic.

However, one product you can not find is a type of hiking boot with a new wading function. This new function will make it easy to turn ordinary boots into wading boots when you have to cross deep snow or water.

This new function would be very much welcomed by biologists, game preservationists, nature pedagogues or anyone with the same love of nature.

Since the hiking boot is unisex the design needs to fit both men and women. Existing hiking boots often

come in shades of green but I decided to use brown and beige to make the boot look more like a regular shoe. By doing this the boot became more wearable in environments other than forests. The bottom sole has a leaf pattern that leaves 'natural traces'.

Most parts of the hiking boot are made from natural rubber. The upper soft part is made of a treatable nylon which is 100% waterproof and not sensitive to scratches.





Monika Jakubek
Sleeping in Trains

'Sleeping in Trains' is a concept concerning the lack of privacy, safety and space in today's night trains. Specifically, it is an attempt to satisfy the requirements of single passengers.

The design concept launches a new arrangement with overlapping compartments. Two individuals share a single compartment; the berths are placed at different heights and can be shut by a roller blind to provide the best possible privacy and to minimise the disturbance from fellow passengers. Luggage is protected in large lockers at the bottom. A hygienic exchange system for the sheets provides a good fundament for a relaxing night's sleep.

Björn Bengtsson
Dash

Sail racing requires a lot of activity by the crew all over the deck of the boat. This means that the gear has to be versatile to suit the different situations. The main feature of this digital compass is the ability to fit different viewing angles thanks to the curved screen combined with a display that can show important information in large print, or a split screen mode with two identical sets of data on each side.



Sophie von Wachenfeldt
A Beautiful Day on Water

There is something special about being out on water. This project has been about capturing the essence in feelings such as freedom and relaxation.

It is a concept for upcoming generations. It is a boat that stands for itself, both considering energy consumption and identity.

With the state-of-the-art technology of today, this boat will fulfil the need of a future tomorrow: to spend a beautiful day on the water.



Anders Öberg
Arba'a

My brief: Designing a golf car for use in the Arab Emirate of Dubai, a place where the tallest building in the world is currently under construction and which is home to many new and spectacular projects.

'Arba'a' which means four in Arabic has four seats, two front and two rear. It also has room for two large sized golf bags, plenty of extra storage space

and comfortable seats, all without exceeding a size suitable for the golf course.

The simple joystick command makes it fun and easy to control and the solar cell powered electric engine makes it ideal for places with a lot of sun hours. It is environmentally and user friendly!



Jansen Pinto
Kid's Step Up

'Kid's Step Up' offers a proper place in the kitchen for kids who are too short to reach the height of standard kitchen counters. It also establishes a physical working zone for kids in the kitchen.



Anna Wolanska
Flat Fridge

The concrete apartments of big cities will become smaller and kitchens will merge with living rooms. So will the products that distinguish these rooms from each other today. This project takes up problems such as storage and visibility. It also questions our old household standards as being a potential problem regarding our urbanised future society.

Nature will also play a bigger and more important

role in the coming century. Sustainable concerns will turn ideas of how to use energy loss in our homes into an everyday normality, and the lack of and distance to nature in bigger cities can create a longing to bring nature closer to home. Pesticides and gene manipulated food will become a turning point in realising what agriculture means to us and in bringing it back into our ordinary daily life.



Stephanie Chu Ming Chen
Airhob

'Airhob' is an induction stovetop with an air curtain, designed to minimise the splattering of grease. It has an induction wok-heating element on the left and a four zone cooking surface with pan-sizing technology on the right.

Air from the environment is sucked by a fan through the slits on the outer perimeter and blown out through the inner slits (research shows that air maintains higher speed over the same distance when blown out through slits instead of holes).

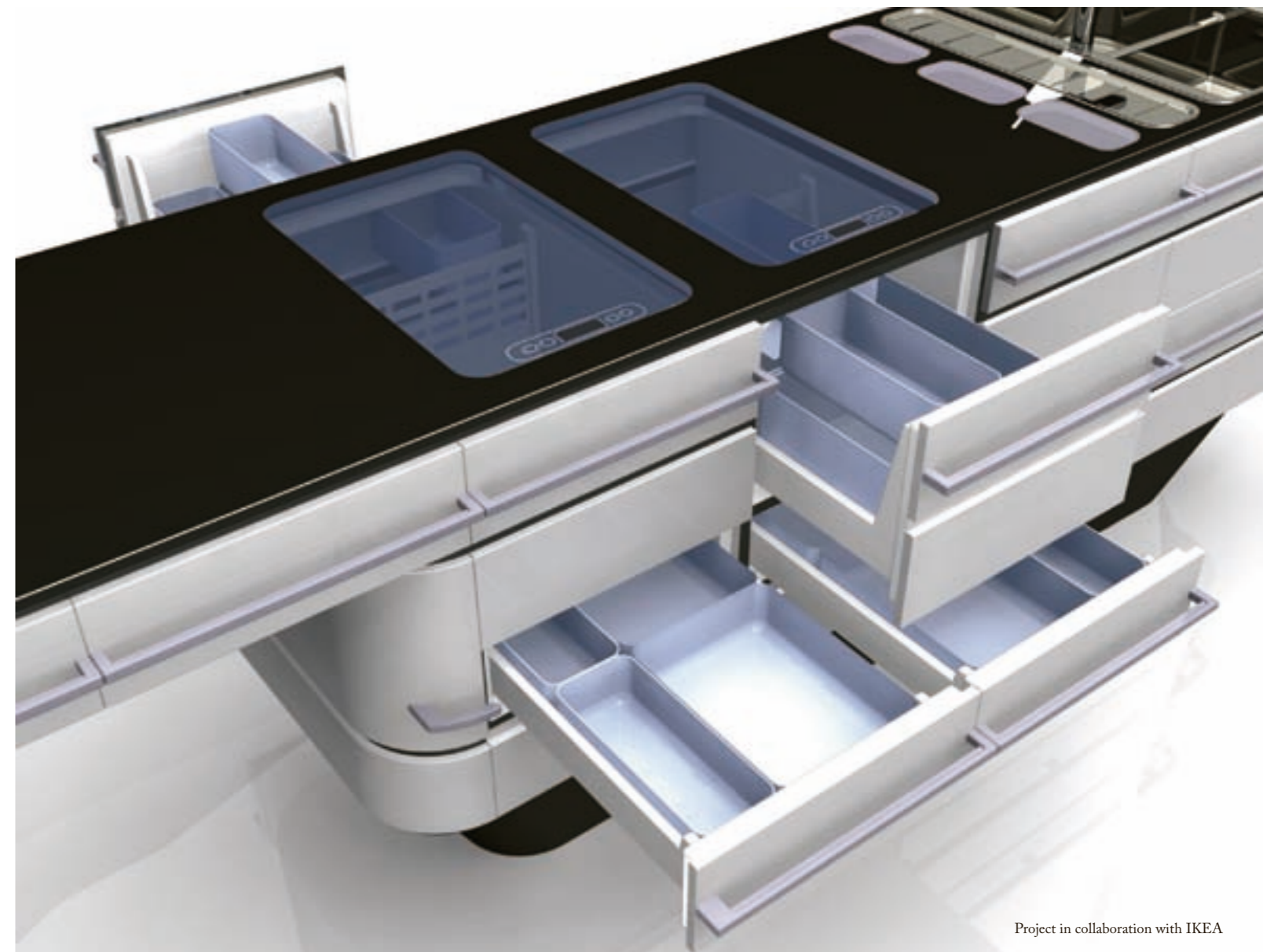
The air curtain falls within the perimeter of the fume extractor so that there is effective removal

of fumes. Air from the outer perimeter will be sucked into the stovetop at an angle due to pressure differences between the upward moving air curtain and the environment. The air curtain and heating zones are operated through touch controls.



Luca Corvatta
To-gather

'To-gather' is a kitchen that encourages face-to-face relationships and collaboration between people cooking. It's a hybrid furniture system that can be used not only for cooking; a kitchen in which you can live, which is easy to use and understand thanks to a different approach to technology.



Susanne Ruijsenaars
Fusion

The aim of this project was to create an area for food storing, cooking, dining and socialising. I didn't want it to be a typical kitchen island, but more relaxed and cosy, something that would fit into the merging of kitchen and living room.

The result was 'Fusion', a small mobile table that transforms into a kitchen when needed. 'Fusion' has the basic necessities for cooking and dining and is equipped with drawers, fridge, freezer, microwave oven, dishwasher, induction cooker and even a fan. With inspiration from the Asian way of dining, the seating takes place on the floor.

My main focus was to reduce water waste while still offering a way to keep the kitchen and the dishes clean. My solution was to add a small water tank that could be filled up through a nearby pump. The water tank also solves the mobility issues and makes you more aware of how much water you really use.



Philip Todorovski
Arvedel

The bottom line with 'Arvedel' is to allow a kitchen to be inherited by the next owner. The intended users are new apartment owners, whose kitchen storage evolves from week to week.

Being assembled by five modular components, 'Arvedel' allows the owner of the kitchen system to freely and easily combine these into kitchen storage which suits the user's needs.

