



iff

IFF CAMPUS BRABRAND

Student Projects – Spring 2024

EDUCATING TOMORROW'S SCIENTISTS

Bachelor, Master & PhD Students

On average we have 25 students per year from all around the world doing their bachelor, master or PhD project at Campus Brabrand.

Collaboration with Universities

A long tradition for working together with universities around the world.



IFF VISIBILITY, TALENT & STUDENTS

Career days 2024

1. Aarhus Univ. School of Engineering
'Projekt-dag' Biotech., Chem., Food Techn.
- March 5, 3 – 6pm
2. DTU Career Night – April 24, 5-8pm
3. AgroFoodPark Career Day - Sept. 19
4. Synapse – Life Science Career Fair
- Aarhus Univ. - November - tbd



IFF CAMPUS BRABRAND – PROJECTS FOR M.SC./B.SC. STUDENT, INTERNSHIP

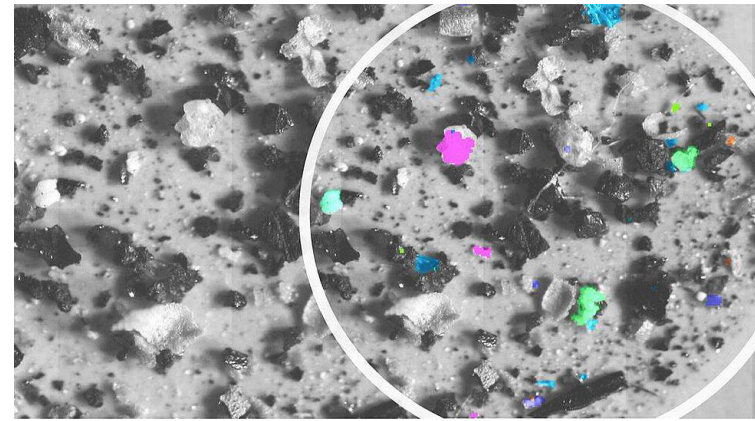
M.Sc. Project – Autumn 2024:

Microplastics in Food, Feed & Feces:

Microplastics is a global issue for water-ecosystems and a potential issue in food as well for human health. Among issues are the adhesion of environmental contaminants to microplastics surfaces.

Analysis of Microplastics is complicated, and the student will work with for example:

- Sample dissolution
- Enzymatic degradation of non-plastic organic material
- Microscopy
- Data Science & Machine Learning
- Advanced Instrumentation:
 - Multi-spectral NIR/VIS particle imaging
 - Vibrational spectroscopy (FTIR/Raman) Imaging
 - Pyrolysis GC-MS



UN Sustainable Development Goals

⁴ IFF supervisors: Mikka Stenholdt-Hansen, Henrik Kragh, Henrik Max Jensen

IFF CAMPUS BRABRAND – PROJECTS FOR M.SC./B.SC. STUDENT, INTERNSHIP

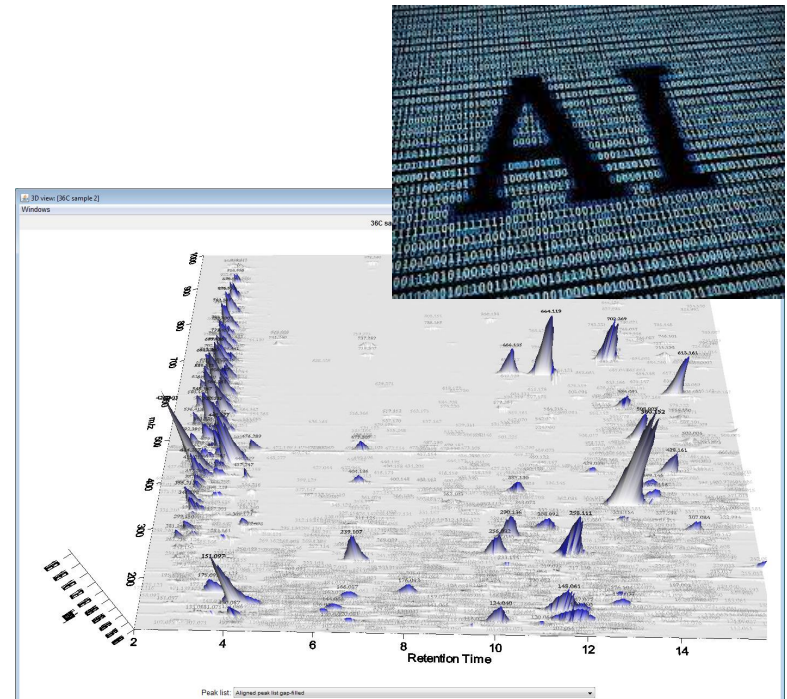
Internship/B.Sc. or M.Sc. Level project – Autumn 2024: Chromatography meets AI

IFF Bioscience for Life. To understand regulation of the complex biochemistry of microorganisms, plants, animals and humans we apply advanced LC-MS-MS analytical methods.

Computational methods are used to interpret data. The student project is to apply retention time prediction using AI tools based on chemical structures.

As student, you will learn:

- Advanced analytical LC-MS-MS
- Data mining of complex data sets
- Metabolite databases creation
- Implementing AI tools using Python/R scripts





IFF Campus Brabrand
Innovation, Application & Technology

