

About Summer School

Transdisciplinary Summer School on the Environment provides unique opportunities for undergraduate and master course students who wish to acquire knowledge and skills on environmental management and science for environmental conservation. The HyFlex Summer School consists of International Environmental Expert Seminar, Problem-Based Learning, and Internship at the Faculty of Environmental Science, Nagasaki University, Japan or via online linking with your own home and partner universities.

International Environmental Expert Seminar (IEES) & Problem-Based Learning (PBL) on the environment July 8– August 30, 2024

International Environmental Expert Seminar (IEES) provides multidisciplinary lectures with topics ranging from Japanese environmental management policies to the science and technology for the environmental issues. Problem-Based Learning (PBL) includes group discussions, local field trips, and group presentations on environmental problems of students' home countries. Students will receive 2 credits on the completion on the IEES and PBL.

Laboratory Internship & Young Researcher Training by Asian Environmental Resilience Research Center (AERRC) July 23– August 19, 2024

Laboratory internship opportunities are hosted by our faculty members with expertise ranging from social science to natural science. Laboratory work includes analytical/green chemistry, toxicology, solid waste management, physiology, bioengineering, geology, phycology, conservation ecology, environmental law, economics, sociology, international relations, management and planning. Please visit our website (<http://www.env.nagasaki-u.ac.jp/english/members.html>) for available options. AERRC provides training program for young researchers to promote transdisciplinary environmental research for SDGs.

July	8 Mon	9 Tue	10 Wed	11 Thu	12 Fri	13 Sat	
1 st week (Online)	Orientation Opening remarks	First half of IEES (<i>on-demand classes of four key topics in environmental science</i>)					
		Discovering the roots of industrial pollution in Japan (Dr. Yuuki TOMOZAWA) & Challenges for sustainable forest management (Dr. Masahiko OTA)					
		Can you measure the weight of a molecule? (Dr. Yuji TAKAO) & Clouds and climate (Dr. Kazuaki KAWAMOTO)					
July	15 Mon	16 Tue	17 Wed	18 Thu	19 Fri	20 Sat	
2 nd week (Online)	Japanese Holiday: Marine day	First half of IEES (<i>continued</i>)					
July	22 Mon	23 Tue	24 Wed	25 Thu	26 Fri	27 Sat	
3 rd week (HyFlex)	Arrival at Nagasaki	Laboratory Internship & Young Researcher Training (1 st round: 8 days)					
July	29 Mon	30 Tue	31 Wed	1 Thu	2 Fri	3 Sat	
4 th week (HyFlex)	PBL progress check (online)	Laboratory Internship & Young Researcher Training (2 nd round; 8 days)					
August	5 Mon	6 Tue	7 Wed	8 Thu	9 Fri	10 Sat	
5 th week (HyFlex)	PBL progress check (online)				PBL Group Meeting & Nagasaki History and Cultural Exchange	Nagasaki Memorial Day (Peace day)	
August	12 Mon	13 Tue	14 Wed	15 Thu	16 Fri	17 Sat	
6 th week (HyFlex)	Self study Japanese Holiday: Mountain day (observed)	Self study (NU's Summer Closure)	Self study (NU's Summer Closure)	Self study (NU's Summer Closure)	Preparing PBL presentation & abstract		
August	19 Mon	20 Tue	21 Wed	22 Thu	23 Fri	24 Sat	
7 th week (HyFlex)	Internship presentation & PBL progress check	Second half of IEES (<i>face-to-face classes</i>)					
		(Dr. Y. TOMOZAWA & Dr. M. OTA)					
		(Dr. Y. TAKAO & Dr. K. KAWAMOTO)					
August	26 Mon	27 Tue	28 Wed	29 Thu	30 Fri	31 Sat	
8 th week (HyFlex)	PBL progress check	Nagasaki Peace Study (TBA)	Submit PBL abstract	PBL presentation & Discussion	Closing remarks	Preparing return trip	

IEES Lecturers in AERRI 2024



Transdisciplinary Summer School on the Environment (Asian Environmental Resilience Research Initiative 2024) International Environmental Expert Seminar



Assoc. Prof. Dr. Yuuki TOMOZAWA

Environmental Sociology Laboratory,
Department of Environmental Science,
Graduate School of Fisheries and Environmental Sciences,
Nagasaki University



“Discovering the roots of industrial pollution in Japan”

Japan’s rapid modernization in the 19th and 20th centuries was built on a number of serious pollution incidents at home and abroad. This lecture will present the history of pollution in Japan and the experiences of people’s struggle to overcome both pollution and social injustice.

Prof. Dr. Yuji TAKAO

Environmental Chemical Micro-analysis Laboratory,
Department of Environmental Science,
Graduate School of Fisheries and Environmental Sciences,
Nagasaki University



“Can you measure the weight of a molecule?”

In recent years, mass detectors have been widely used in environmental analysis. You will learn the principles of this detector and deepen your understanding of its advantages, disadvantages, and environmental applications.

Assoc. Prof. Dr. Masahiko OTA

Natural Resource Management Laboratory,
Department of Environmental Science,
Graduate School of Fisheries and Environmental Sciences,
Nagasaki University



“Challenges for sustainable forest management”

Managing forests sustainably requires a deeper understanding of institutional, economic, and social aspects. This lecture will elucidate the current status and challenges of forest management, with a particular focus on tropical Asia and Japan.

Prof. Dr. Kazuaki KAWAMOTO

Satellite Climatology Laboratory,
Department of Environmental Science,
Graduate School of Fisheries and Environmental Sciences,
Nagasaki University



“Clouds and climate”

Clouds occupy about 60% of the earth’s surface and play a crucial role for formation of the climate via dynamical, hydrological and radiative processes. In this lecture, the relationship between clouds and climate will be described mainly by observed data.

Host Professors of Laboratory Internship in AERRI 2024

Laboratory information is as of 1st October 2023. Please check the latest information at our web page using the QR code.



Environmental Policy		Science & Technology	
Prof. Aiko ENDO (Water-Energy-Food Nexus)	Assoc. Prof. Masahiko OTA (Natural Resource Management)	Prof. Hiroshi ASAKURA (Solid Waste and Resource Engineering)	Prof. Hideki NAKAYAMA (Environmental Bioengineering)
Assoc. Prof. Satoshi FUKAMI (Tourism and Environmental Education)	Prof. Yoko SEKI (Environmental Philosophy)	Prof. Kei’ichiro IGUCHI (Conservation Ecology)	Assoc. Prof. Tomoki NAKAYAMA (Atmospheric Environmental Science)
Prof. Seiko GOTO (Landscape Architecture)	Assoc. Prof. Yosuke SHIGETOMI (Environmental System)	Assoc. Prof. Masafumi IIMA (Phycology)	Prof. Masaya NISHIYAMA (Soil Science)
Assoc. Prof. Hironori HAMASAKI (Environmental Governance)	Assoc. Prof. Sunhee SUK (Environmental Business and Management)	Assoc. Prof. Makoto KAGABU (Environmental Water Science)	Prof. Jiro OKADA (Neuroethology and Ecotoxicology)
Assoc. Prof. Mitsuru HATTORI (Evolutionary Ecology)	Assoc. Prof. Takayuki TAKESHITA (Energy, Environmental, and Economic Systems Analysis)	Prof. Kazuaki KAWAMOTO (Satellite Climatology)	Prof. Seiji SHIRAKAWA (Green Chemistry)
Assoc. Prof. Moe HONJO (Animal Law and Policy)	Assoc. Prof. Yuuki TOMOZAWA (History of Environmental Philosophy in Japan)	Assoc. Prof. Mitsuhiko KOYAMA (Resource Circulation Bioengineering)	Prof. Yuji TAKAO (Environmental Analytical Chemistry)
Prof. Kensuke KATAYAMA (Urban and Regional Planning)	Assoc. Prof. Yoko WADACHI (Environmental Politics)	Assist. Prof. Takashi KUBO (Environmental Safety Science)	Assoc. Prof. Hiroyuki TAKASU (Biogeochemistry and Marine Environmental Science)
Prof. Hidehiro KIKUCHI (Environmental Law and Policy)	Prof. Takashi WATANABE (Landscape and Regional Planning)	Prof. Tetsuji MUTO (Morphodynamics and Stratigraphy)	Prof. Kodo UMAKOSHI (Seismology and Volcanology)
Assoc. Prof. Satoru KURODA (Environmental and Regional Sociology)	Assoc. Prof. Mamoru YOSHIDA (Environmental Planning and Disaster Risk Management)	Prof. Masaki NAGAE (Environmental Toxicology)	Assoc. Prof. Masahiro YAMAGUCHI (Plant and Atmospheric Environment)
Prof. Hirohiko NISHIKUBO (Environmental Law and Policy)		Prof. Kei NAKAGAWA (Environmental Groundwater Science)	Prof. Noriyuki YAMAGUCHI (Animal Ecology)

Nagasaki University Area Map

About the Nagasaki City

Population

The population of Nagasaki city is about 410,000. 長崎市の人口は約41万人です。

Environment

A centralized city that has a mix of the ocean, mountains, and a downtown area. 海・山・市街地が一つになったコンパクトな町です。

Cultural heritage

8 of the locations listed under UNESCO's "Sites of Japan's Meiji Industrial Revolution." 「明治日本の産業革命遺産」としてユネスコ世界遺産に登録された構成遺産が長崎には8つあります。

History

Nagasaki city has a culture of its own, one that is a mixture of Western, Chinese and traditional Japanese culture. 長崎は西欧、中国、そして日本の文化が融合している歴史的な町です。

Traffic

The tram that will make your transportation around the city much easier. 路面電車で長崎市内を簡単に周れます。

About Nagasaki 長崎について

Nagasaki is a very unique city where you can enjoy nature, historical sites and urban area at the same time. While you live in Nagasaki city, you can enjoy shopping, hiking, and going to beaches. You don't want to miss the breathtaking night view of Nagasaki city that has been recognized as one of the "New Three Great Night Views of the World."

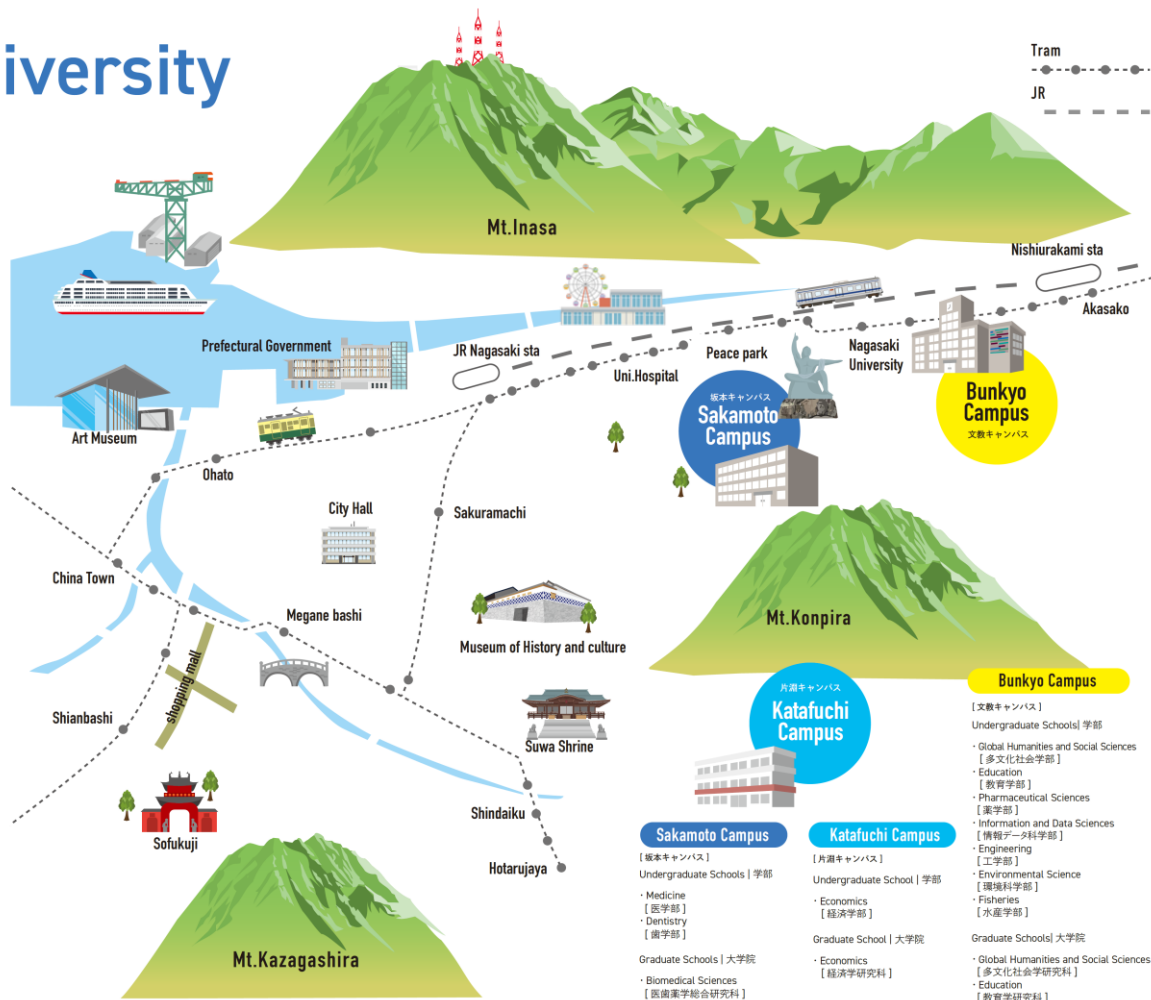
長崎は、自然と史跡、市街地を同時に楽しめるユニークな街です。市内に住みながら、ショッピングやハイキング、夏にはビーチを楽しめます。また、長崎は「新世界三大夜景」に選ばれた街でもあります。長崎の夜景は見逃せません。

Climate 気候

Enjoy the beauty of all four seasons in Nagasaki!

長崎では、日本独特のはっきりとした四季を楽しめます。

Season 四季	Climate 気候	What you can enjoy 特色
Spring 春 March to May 3~5月	About 20°C. Moderate. Comfortable weather. 約20度。暑くもなく寒くもなくちょうど良い季節。	Flower viewing, Hanami! 花見を楽しめます。
Summer 夏 June to August 6~8月	About 32°C. Hot and humid. Rainy season in July. 約32度。暑くて湿度が高いです。7月は雨期に入ります。	Beautiful beaches. 美しいビーチが多くあります。
Fall 秋 September to November 9~11月	About 23°C. Moderate. Comfortable weather. 約23度。暑くもなく寒くもなくちょうど良い季節。	A huge festival called Kunchi which Nagasaki resident are passionate about. 長崎市民が毎年心待ちにしている、長崎で一番大きな祭り、くんちがあります。
Winter 冬 December to February 12~2月	About 8°C. Very dry. 約8度。空気がとても乾燥します。	Occasionally snow flurries without heavy snow. 大雪にはなりません。たまに降る雪の美しさを楽しめます。



Cost of Living 生活費

Lunch ランチメニュー(飲み物含む)	¥500-¥1,500
Combo meal in fast food restaurant ファストフード店でのセットメニュー	¥700
1 liter of whole fat milk 牛乳(1ℓ)	¥150-¥210
12 eggs (large) 卵1ダース	¥150-¥220
A bottle of mineral water (500 ml) at supermarket ミネラルウォーター(500ml)	¥70-¥150
A bottle of mineral water (2L) at supermarket ミネラルウォーター(2ℓ)	¥120-¥200
A cup of coffee at a café カフェでのコーヒー	¥350-¥500
A movie ticket(student) 映画チケット(学生割引)	¥1,500



Sakamoto Campus

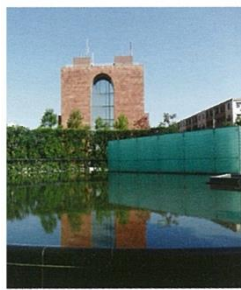
[坂本キャンパス]
Undergraduate Schools | 学部
 ・ Medicine [医学部]
 ・ Dentistry [歯学部]
 ・ Tropical Medicine and Global Health [熱帯医学・グローバルヘルス研究科]
 Graduate Schools | 大学院
 ・ Biomedical Sciences [医歯薬学総合研究科]
 ・ Pharmaceutical Sciences (Doctoral Course) [薬学(博士後期)]
 ・ Tropical Medicine and Global Health [熱帯医学・グローバルヘルス研究科]

Katakuchi Campus

[片淵キャンパス]
Undergraduate School | 学部
 ・ Economics [経済学部]
 Graduate School | 大学院
 ・ Economics [経済学研究科]

Bunkyo Campus

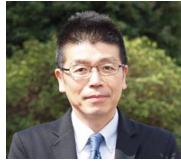
[文政キャンパス]
Undergraduate Schools | 学部
 ・ Global Humanities and Social Sciences [多文化社会学部]
 ・ Education [教育学部]
 ・ Pharmaceutical Sciences [薬学部]
 ・ Information and Data Sciences [情報データ科学部]
 ・ Engineering [工学部]
 ・ Environmental Science [環境科学部]
 ・ Fisheries [水産学部]
 Graduate Schools | 大学院
 ・ Global Humanities and Social Sciences [多文化社会学部研究科]
 ・ Education [教育学研究科]
 ・ Pharmaceutical Sciences (Master Course) [薬学(博士前期)]
 ・ Engineering [工学研究科]
 ・ Fisheries and Environmental Sciences [水産・環境科学総合研究科]



Nagasaki Atomic Bomb Museum

Field trips

Message



Come and learn about environmental policy and technology in Japan

Dean, Prof. Jiro OKADA

Faculty of Environmental Science was established in 1997 to solve emerging global and regional environmental problems. Our education and research aim is to train prospective students as environmental professionals in a transdisciplinary environment to serve for the benefit of the global society. We welcome all of you to Nagasaki University to share this excellent opportunity during this summer.

2023 participants' feedback

**Great experiences in the Summer School.
Sonya from Mahidol University, Thailand**

The Summer School Program is an eye-opening experience for me, this program allows me to make new friends from different countries, while also study under the professors during the internship period. This is one of the best academic events that I ever participated in my life. The three weeks internship period is the time of learning with the professors of my choosing in the field of study that I am interested in. And the result of the internship is fruitful, I have gained more new knowledge and learned about the topic and field that I am interest in, and this helped me in determining the path of my future.

**A wonderful experience getting to know and working with everyone from different places.
Laura from Lancaster University, United Kingdom**

It was a worthwhile experience working with students from Japan, Thailand, and Indonesia, and learning and experiencing the cultural differences and work styles etc. Interesting lectures, lab work and PBL topics to learn from in all aspects of environmental science and the different attitudes and problems faced by people from around the world. I thought some of the follow up in person lectures could have been more teaching focused, but the initial online lectures were all very interesting and to learn from a different perspective than I have been exposed to before. Overall, I really enjoyed the experience, and thought everyone involved were very friendly and created a nice environment. I feel like I have learnt a lot from it.



Memorial photos



Participants of the Transdisciplinary Summer School on the Environment (AERRI 2023)

How to apply

Please contact International Exchange Office of your university. Students from universities holding MOU with Nagasaki University are waived from tuition and fees. Participants are responsible for their cost of travel and accommodation. Limited scholarships are available.

Enquiries

International Exchange Committee,
Faculty of Environmental Science,
Nagasaki University
1-14 Bunkyo-machi, Nagasaki-shi,
Nagasaki 852-8521, Japan
Phone: +81-(0)95-819-2715
E-mail: env_international@ml.nagasaki-u.ac.jp
URL: <http://www.env.nagasaki-u.ac.jp/english/>



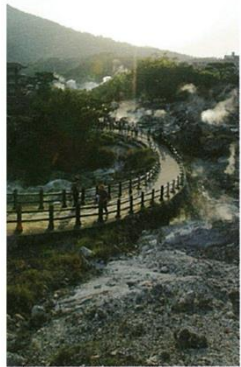
Access to Nagasaki University



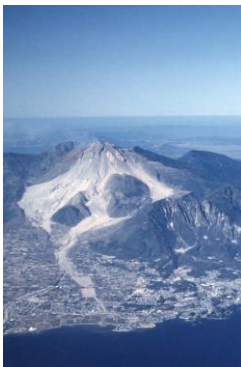
- From Fukuoka International Airport
2 hours by highway express bus to Nagasaki
- From Nagasaki Airport
50 minutes by limousine bus via Showa-machi
- From JR Nagasaki Station
20 minutes by tram #1, 2 & 3 towards Akasako



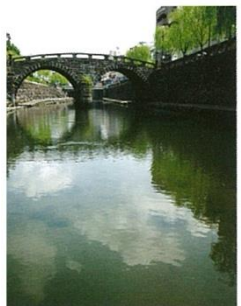
Mitsubishi Heavy Industries, Industries, Ltd. Nagasaki Shipyard.



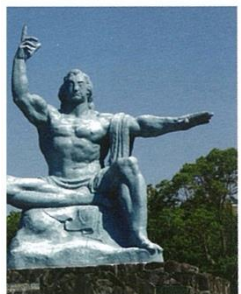
Unzen Geopark



Unzen Volcano (front right: Mt. Mayu, back left: Heisei-shinzan)



Megane-bashi (Spectacles Bridge)



Nagasaki Peace Park



Faculty of Environmental Science, Nagasaki University
1-14 Bunkyo-machi, Nagasaki-shi, Nagasaki 852-8521, Japan
Tel. +81-(0)95-819-2715 Fax. +81-(0)95-819-2716